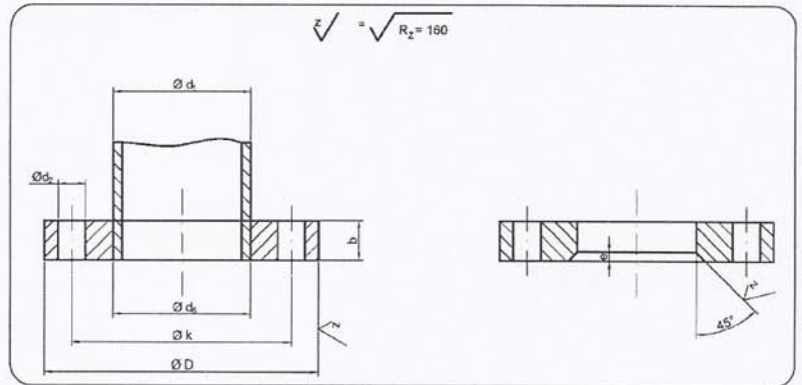




Brida Lisa para Soldar DIN 2573.

Presión Nominal 6.



Medidas de Acoplamiento del Tubo			Dimensiones de Brida					Taladros			Peso por Brida Kg. ≈
Paso Nominal	d_1		d_s	D	b	e	k	Número	Rosca	d_2	
	Serie 1	Serie 2									
10	- 17.2	14.0 -	14.5 17.7	75	12	5	50	4	M 10	11	0.36
15	- 21.3	20.0 -	21.0 22.0	80	12	5	55	4	M 10	11	0.41
20	- 26.9	25.0 -	26.0 27.6	90	14	5	65	4	M 10	11	0.60
25	- 33.7	30.0 -	31.0 34.4	100	14	5	75	4	M 10	11	0.74
32	- 42.4	38.0 -	39.0 43.1	120	16	5	90	4	M 12	14	1.19
40	- 48.3	44.5 -	45.5 49.0	130	16	5	100	4	M 12	14	1.39
50	- 60.3	57.0 -	58.1 61.1	140	16	6	110	4	M 12	14	1.53
65	76.1	-	77.1	160	16	6	130	4	M 12	14	1.89
80	88.9	-	90.3	190	18	7	150	4	M 16	18	2.98
100	- 114.3	108.0 -	109.6 115.9	210	18	7	170	4	M 16	18	3.46
125	- 139.7	133.0 -	134.8 141.6	240	20	7	200	8	M 16	18	4.60
150	- 168.3	159.0 -	161.1 170.5	265	20	7	225	8	M 16	18	5.22
200	219.1	-	221.8	320	22	7	280	8	M 16	18	7.15
250	- 273.0	267.0 -	270.2 276.2	375	24	7	335	12	M 16	18	9.61
300	323.9	-	327.6	440	24	7	395	12	M 20	22	12.60
350	355.6 -	- 368.0	359.7 372.2	490	26	7	445	12	M 20	22	15.60
400	406.4 -	- 419.0	411.0 423.7	540	28	7	495	16	M 20	22	18.40
(450)	457.0	-	462.3	595	30	7	550	16	M 20	22	21.40
500	508.0	-	513.6	645	30	7	600	20	M 20	22	24.60